



Accessories for
Insulation Resistance Meters

A MICttitude of applications



measurements



test leads



communication



software



power supply



transportation

Sonel® we measure globally



measurements



WS-04 adapter

index: WAADAWS04

WS adapters are highly valued and practical accessories. They enable user a quick and easy measurement in a UNI-Schuko socket without the use of probes or test leads. Interaction with the measuring device is possible through a multi-plug connector. WS-04 is equipped with an angled plug.

Accessory dedicated for:

MIC-30



Measurements of multicore cables

Depending on the measurement facility and the established standards (each conductor to each or conductor to other shorted and grounded conductors), the measurement of the insulation resistance of wires or multi-core cables requires several connections. In order to shorten the measurement time and eliminate the inevitable connection errors, Sonel introduced an adapter that switches between individual pairs of conductors for the operator.



AutoISO-5000 adapter

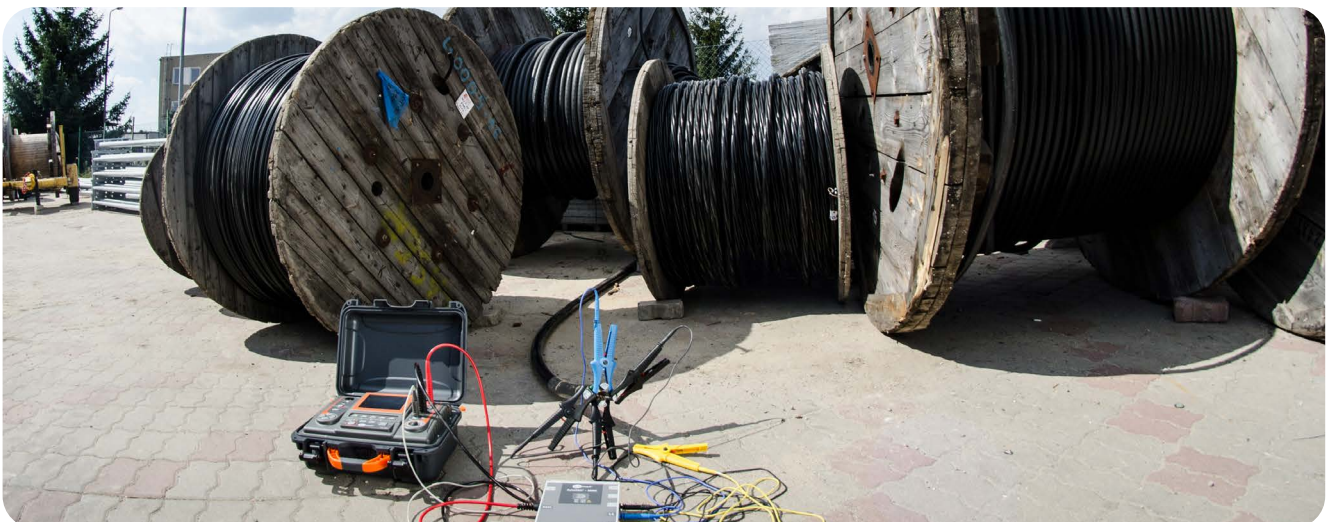
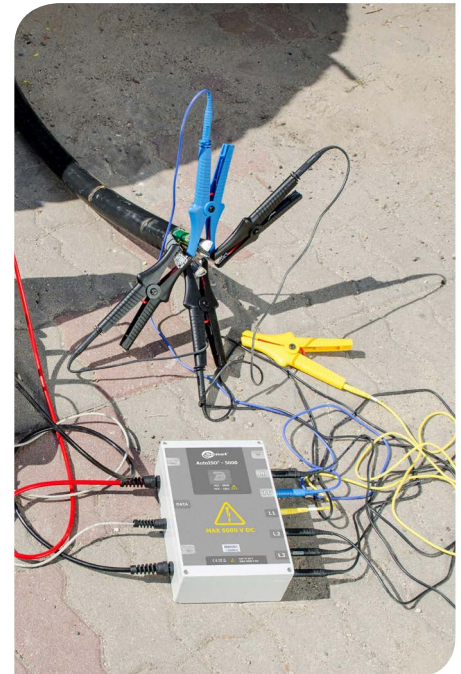
index: WAADAAISO50

Designed to measure the insulation resistance of cables and multi-core wires with a measuring voltage of up to 5000 V. The use of the adapter eliminates the possibility of making a mistake, and significantly reduces the time needed to measure the insulation resistance between pairs of conductors. For instance, for 4-core cables, the user will perform only one connection operation (i.e. connect the adapter to the facility), while AutoISO-5000 will perform crossing for six consecutive connections.

Accessory dedicated for:

MIC-10kI

MIC-5050





AGT-16T adapter



AGT-32P adapter



AGT-63P adapter



Industrial socket adapters

Adapters enabling the connection of instruments to single-phase or three-phase sockets in industry environments. Offered in three current load versions – 16 A, 32 A and 63 A – as well as variants with 4 and 5 pins for the 3-phase outlets.

Name	Intended use	Index
AGT-16T	16 A, 1-phase, 3-pole sockets	WAADAAGT16T
AGT-16C	16 A, 3-phase, 4-pole sockets	WAADAAGT16C
AGT-16P	16 A, 3-phase, 5-pole sockets	WAADAAGT16P
AGT-32T	32 A, 1-phase, 3-pole sockets	WAADAAGT32T
AGT-32C	32 A, 3-phase, 4-pole sockets	WAADAAGT32C
AGT-32P	32 A, 3-phase, 5-pole sockets	WAADAAGT32P
AGT-63P	63 A, 3-phase, 5-pole sockets	WAADAAGT63P

Accessories dedicated for:

MIC-30

MIC-10

PRS-1 probe

index: WASONPRS1GB

If the site insulation is used as a means of protection against electric shock, the insulation resistance of floors and walls should be checked with an appropriate measuring instrument using a probe dedicated for this purpose.

PRS-1 has the shape of an equilateral triangle and has been made according to the guidelines provided in for in the HD 60364-6 and EN 1081 standards. Legs of the probe were made with a special rubber mix – volume resistance of a single leg does not exceed 5 k Ω , and the hardness is in the range between 50 to 70 IRHD. With appropriate pressure on the probe, such a design solution will ensure approx. 900 mm² contact surface area with the tested plane.

Accessory dedicated for:

MIC-15k1

MIC-10k1

MIC-5050

MIC-5010

MIC-5005

MIC-5001

MIC-2501

MIC-30

MIC-10

ST-1 probe

index: WASONT1

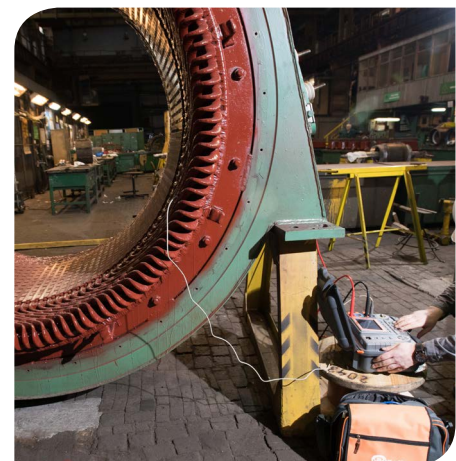
An important aspect of the process of determining insulation resistance is the reference temperature at which manufacturer of the tested facility conducted tests. The measurement result shall be corrected with the correction coefficient for the actual facility temperature. This parameter is measured by the ST-1 probe.

For example, is the reference temperature of the facility is 20°C, and the measurement was carried out in other conditions, the obtained result shall be calculated to the reference temperature by using the proper temperature correction coefficient.

Accessory dedicated for:

MIC-10k1

MIC-5050





measurements

Pin probes



Secure pin probes with Ø 4 mm socket, intended for test leads with plugs and a guard. The probe insulated tips with a length of 4 mm, ensure safe measurements on a various objects. The probes have a guard ring and a grooved surface, providing stable and secure hand grip - also with dielectric gloves.

Pin probes 1 kV

Plug	banana, 4 mm
Measurement category	1000 V, CAT III
Maximum current	20 A

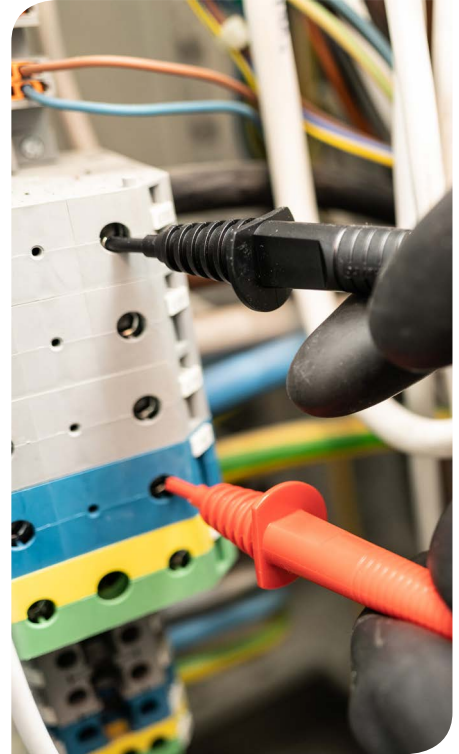
Color	Index
Black	WASONBLOGB1
Red	WASONREOGB1
Blue	WASONBUOGB1

Accessories dedicated for:

MIC-2501

MIC-30

MIC-10



Pin probes 5 kV

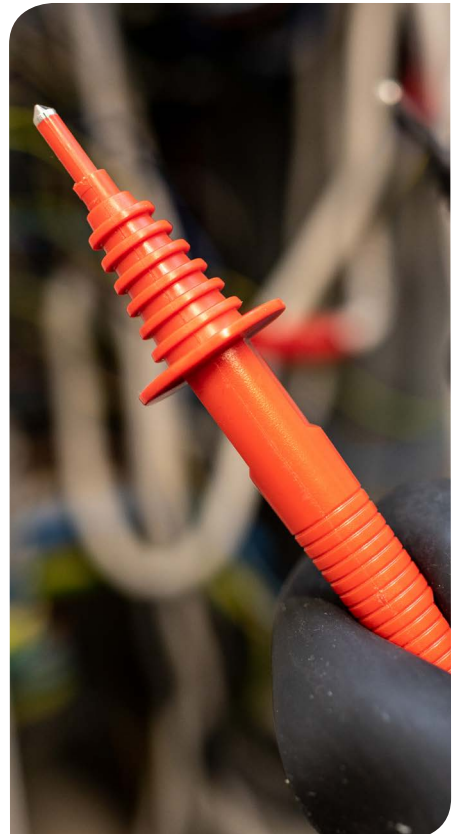
Plug	banana, 4 mm
Measurement category	5000 V, CAT IV
Maximum current	32 A

Color	Index
Black	WASONBLOGB2
Red	WASONREOGB2

Accessories dedicated for:

MIC-5001

MIC-2501



Pin probes 11 kV

Plug	banana, 4 mm
Measurement category	11000 V, CAT IV
Maximum current	32 A

Color	Index
Black	WASONBLOGB11
Red	WASONREOGB11

Accessories dedicated for:

MIC-5010

MIC-5005



Crocodile clips 1 kV

Secure, insulated crocodile clips with Ø 4 mm socket, intended for connecting test leads with plugs and a guard. Their jaws have a wide range of opening that enables them to be attached to conductors with a diameter of 16 mm. In addition to the serrated jaw surface, the clips have flat surfaces for grasping small objects. They are available in many colors.

Plug	banana, 4 mm
Spread range	25 mm
Measurement category	1000 V, CAT III
Maximum current	20 A

Color	Index
Black	WAKROBU20K02
Red	WAKRORE20K02
Blue	WAKROBU20K02

Accessories dedicated for:

MIC-30

MIC-10

Crocodile clips 5 kV

Secure, insulated crocodile clips with Ø 4 mm socket, intended for connecting test leads with plugs and a guard. Their jaws have a wide range of opening that enables them to be attached to conductors with a diameter of 43 mm. In addition to the serrated jaw surface, the clips have flat surfaces for grasping small objects. They are available in many colors.

Plug	banana, 4 mm
Spread range	43 mm
Measurement category	5000 V, CAT IV
Maximum current	32 A

Color	Index
Black	WAKROBL32K09
Red	WAKRORE32K09
Blue	WAKROBU32K09

Accessories dedicated for:

MIC-15k1

MIC-10k1

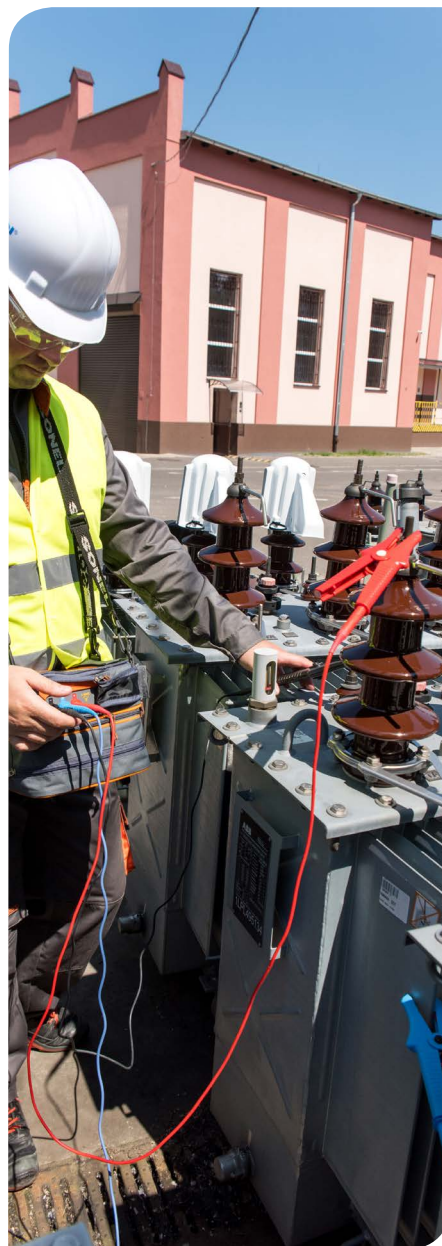
MIC-5050

MIC-5010

MIC-5005

MIC-5001

MIC-2501





measurements



CS-1 cable simulator

index: WAADACS1

Designed for insulation resistance simulation of power cables. Equipped with highly accurate resistors. Intended for training, presentation and auxiliary purposes – for instance in a situation, where general estimation of the measurement correctness is needed.

CS-1 enables the measurement of four resistance values and their combination. The device utilizes 4 mm banana plugs. Its casing is characterized by high resistance to mechanical damage.

Accessory dedicated for:

MIC-2501

MIC-30

MIC-10



CS-5kV calibration box

index: WAADACS5KV

The calibration box has been designed to verify indications of insulation resistance meters. The use of high-quality resistors with a very high degree of accuracy makes the CS-5kV an ideal tool for cooperation with devices with a test voltage of up to 5 kV DC.

The box enables the measurement of four resistance values and their combination. The device utilizes 4 mm banana plugs.

Accessory dedicated for:

MIC-15k1

MIC-10k1

MIC-5050

MIC-5010

MIC-5005

MIC-5001



SRP-10G0-10T0 resistance calibrator

index: WMGBSRP10G010T0

A source of high resistance, used as reference equipment for calibration and testing of analogue and digital insulation resistance meters.

Resistance obtained thanks to the calibrator can remain under a constant external 10 kV DC voltage for a long period of time. The required resistance is set on the calibrator via a touch keyboard or an external PC app. Setting the required value is automatic thanks to the precision commutation of the resistive matrix. The control processor calculates the required resistor combination, ensuring the correct precision of the obtained resistance.

Accessory dedicated for:

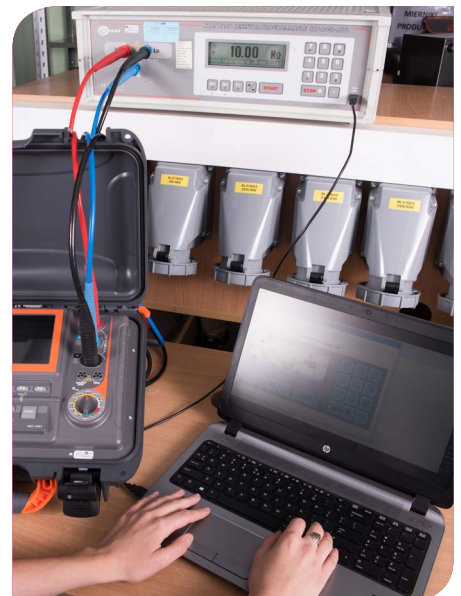
MIC-15k1

MIC-10k1

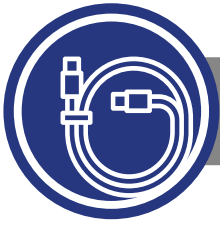
MIC-5050

MIC-5010

MIC-5005







test leads



Test leads 1 kV

Universal test leads, which are safe and resistant to damage. They can be used with a wide range of measuring accessories, such as crocodile clips, probes or cramps. The plug of the test lead is shielded ensuring safe operation.

Plug	banana, 4 mm, safe, straight, nickel plated
Measurement category	CAT III 1000 V / CAT IV 600 V
Insulation material	silicon
Insulation type	double
Cross-section area of the wire	1 mm ²



Color	Length	Index
Black	1.2 m	WAPRZ1X2BLBB

Accessory dedicated for:

MIC-10

Color	Length	Index
Red	1.2 m	WAPRZ1X2REBB
Blue		WAPRZ1X2BUBB
Red	5 m	WAPRZ005REBB
Blue		WAPRZ005BUBB

Accessories dedicated for:

MIC-30

MIC-10

The leads are also available in a shielded variant. One of the ends of the cable consists of two leads – one for the working core and one for the shield.



Plug	banana, 4 mm, safe, straight, nickel plated
Measurement category	CAT III 1000 V / CAT IV 600 V
Insulation material	silicon
Insulation type	double
Cross-section area of the wire	1 mm ²

Color	Length	Index
Black	1.2 m	WAPRZ1X2BLBBE
Black	5 m	WAPRZ005BLBBE

Accessory dedicated for:

MIC-30

MIC-10





Test leads 5 kV

Universal test leads, which are safe and resistant to damage. They can be used with a wide range of measuring accessories, such as crocodile clips, probes or cramps. The plug of the test lead is shielded ensuring safe operation.

Plug	banana, 4 mm, safe, straight, nickel plated
Measurement category	CAT III 1000 V / CAT IV 600 V
Insulation material	silicon
Insulation type	double
Cross-section area of the wire	1 mm ²

Color	Length	Index
Red	1.8 m	WAPRZ1X8REBB
Blue		WAPRZ1X8BUBB
Red	5 m	WAPRZ005REBB5K
Blue		WAPRZ005BUBB5K
Red	10 m	WAPRZ010REBB5K
Blue		WAPRZ010BUBB5K

Accessories dedicated for:

MIC-5050

MIC-5010

MIC-5005

MIC-5001

MIC-2501

The leads are also available in a shielded variant. One of the ends of the cable consists of two leads – one for the working core and one for the shield.

Plug	banana, 4 mm, safe, straight, nickel plated
Measurement category	CAT III 1000 V / CAT IV 600 V
Insulation material	silicon
Insulation type	double
Cross-section area of the wire	1 mm ²

Color	Length	Index
Black	1.8 m	WAPRZ1X8BLBB
Black	5 m	WAPRZ005BLBBE5K
Black	10 m	WAPRZ010BLBBE5K

Accessories dedicated for:

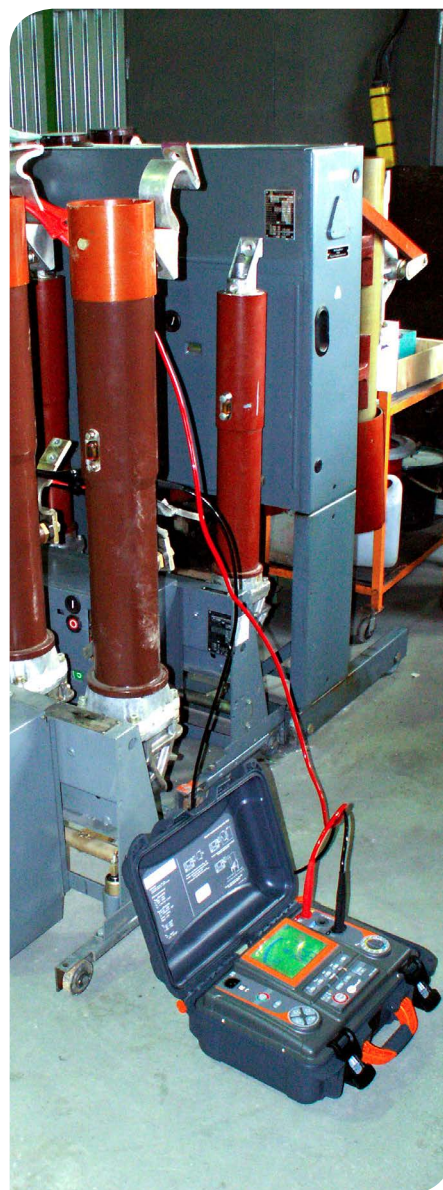
MIC-5050

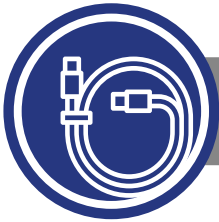
MIC-5010

MIC-5005

MIC-5001

MIC-2501





test leads



Test leads 11 kV

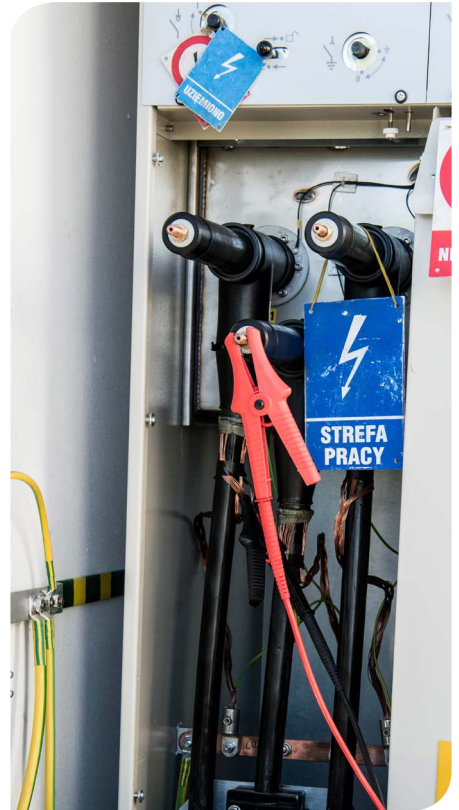
Universal test leads, which are safe and resistant to damage. They can be used with a wide range of measuring accessories, such as crocodile clips, probes or cramps. The plug of the test lead is shielded ensuring safe operation.

Plug	banana, 4 mm, safe, straight, nickel plated
Measurement category	CAT III 1000 V / CAT IV 600 V
Insulation material	silicon
Insulation type	double
Cross-section area of the wire	1 mm ²

Color	Length	Index
Red	1.8 m	WAPRZ1X8REBB10K
Blue		WAPRZ1X8BUBB10K
Red	3 m	WAPRZ003REBB10K
Blue		WAPRZ003BUBB10K
Red	5 m	WAPRZ005REBB10K
Blue		WAPRZ005BUBB10K
Red	10 m	WAPRZ010REBB10K
Blue		WAPRZ010BUBB10K
Red	20 m	WAPRZ020REBB10K
Blue		WAPRZ020BUBB10K

Accessories dedicated for:

- MIC-10k1
- MIC-5050
- MIC-5010
- MIC-5005



The leads are also available in a shielded variant. One of the ends of the cable consists of two leads – one for the working core and one for the shield.

Plug	banana, 4 mm, safe, straight, nickel plated
Measurement category	CAT III 1000 V / CAT IV 600 V
Insulation material	silicon
Insulation type	double
Cross-section area of the wire	1 mm ²

Color	Length	Index
Black	1.8 m	WAPRZ1X8BLBBE10K
Black	3 m	WAPRZ003BLBBE10K
Black	5 m	WAPRZ005BLBBE5K
Black	10 m	WAPRZ010BLBBE10K
Black	20 m	WAPRZ020BLBBE10K

Accessories dedicated for:

- MIC-10k1
- MIC-5050
- MIC-5010
- MIC-5005





Test leads 15 kV

Universal test leads, which are safe and resistant to damage. The lead is terminated with a crocodile clip. The plug of the test lead is shielded ensuring safe operation.

Plug	banana, 4 mm, safe, straight, nickel plated	
Spread range	44 mm	
Measurement category	CAT IV 1000 V	
Insulation material	silicon	
Insulation type	double	
Maximum current	10 A	
Cross-section area of the wire	1 mm ²	

Color	Length	Index
Red	1.8 m	WAPRZ1X8REKRO15KV
Blue		WAPRZ1X8BUKRO15KV
Red	3 m	WAPRZ003REKRO15KV
Blue		WAPRZ003BUKRO15KV
Red	5 m	WAPRZ005REKRO15KV
Blue		WAPRZ005BUKRO15KV
Red	10 m	WAPRZ010REKRO15KV
Blue		WAPRZ010BUKRO15KV
Red	20 m	WAPRZ020REKRO15KV
Blue		WAPRZ020BUKRO15KV

Accessories dedicated for:

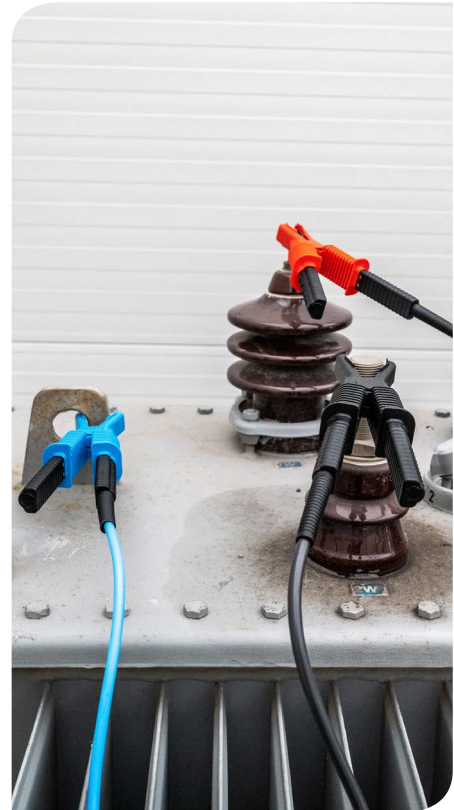
MIC-15k1

MIC-10k1

MIC-5050

MIC-5010

MIC-5005



The leads are also available in a shielded variant. One of the ends of the cable consists of two leads – one for the working core and one for the shield.

Plug	banana, 4 mm, safe, straight, nickel plated	
Spread range	44 mm	
Measurement category	CAT IV 1000 V	
Insulation material	silicon	
Insulation type	double	
Maximum current	10 A	
Cross-section area of the wire	0.75 mm ²	

Color	Length	Index
Black	1.8 m	WAPRZ1X8BLKROE15KV
Black	3 m	WAPRZ003BLKROE15KV
Black	5 m	WAPRZ005BLKROE15KV
Black	10 m	WAPRZ010BLKROE15KV
Black	20 m	WAPRZ020BLKROE15KV

Accessories dedicated for:

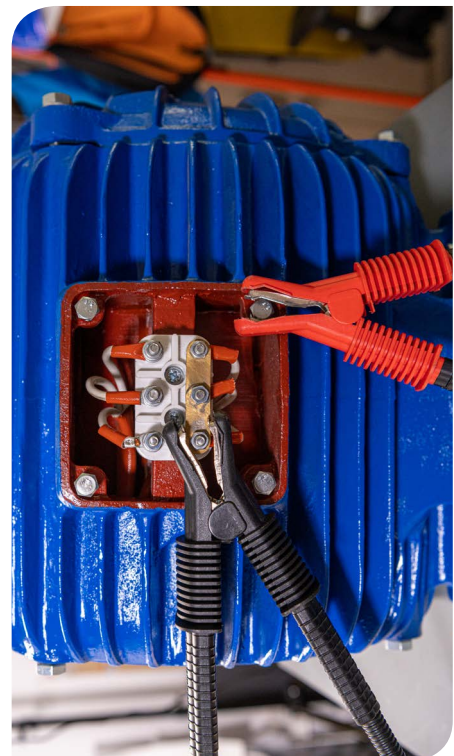
MIC-15k1

MIC-10k1

MIC-5050

MIC-5010

MIC-5005





communication



Keyboard



S4 armband case



Set

Mini Bluetooth keyboard

A mini keyboard enabling more comfortable data entry during measurement performance. Communication with the test instrument is wireless via Bluetooth. Protective case is equipped with hand fastening.

Set	Index
Mini Bluetooth keyboard	WAADAMK
S4 armband case for the keyboard	WAFUTS4
Set - keyboard with armband case	WAADAMKZ

Accessories dedicated for:

- MIC-10k1
- MIC-5050



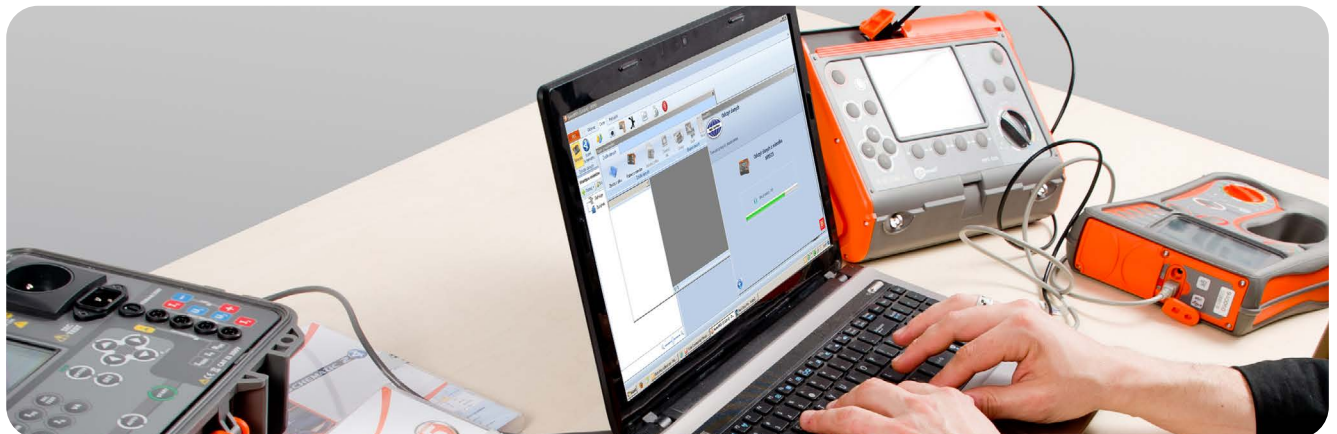
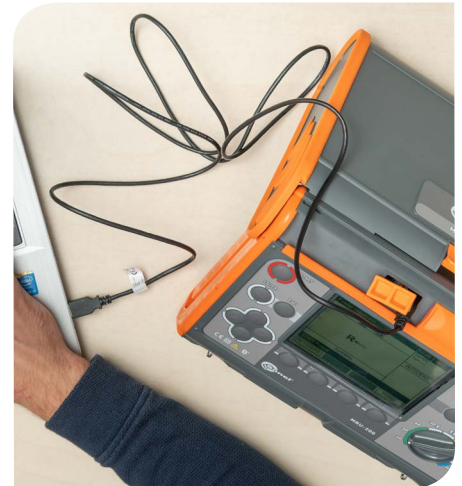
USB cable

index: WAPRZUSB

The cable with connectors of A and B type, compatible with USB 1.1 and 2.0. It is intended to connect the computer to Sonel devices equipped with USB sockets of B type. The cable is used to transfer the measurement results, configurations and updating the firmware of many meters.

Accessory dedicated for:

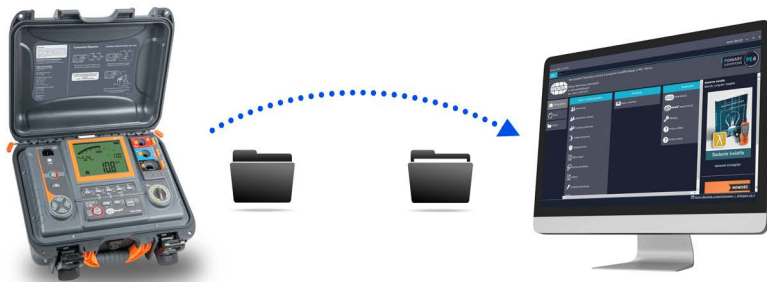
- MIC-15k1
- MIC-10k1
- MIC-5050
- MIC-5010
- MIC-5005
- MIC-5001
- MIC-2501





software

Manage your data!



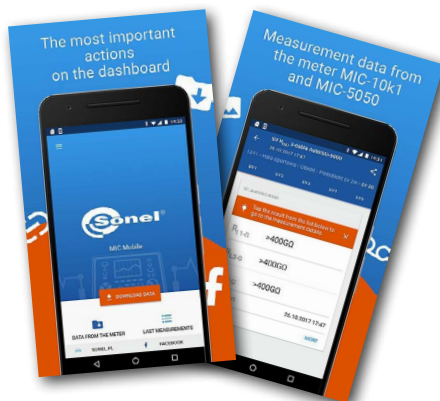
Sonel Reports PLUS

Download data from memory of test instruments and create necessary documentation.



Sonel Reader

Read the measurement data and save them on your computer.



Sonel MIC Mobile

Read the measurement data. Add photographs, comments and voice memo - and share it.



software



Sonel Reports PLUS

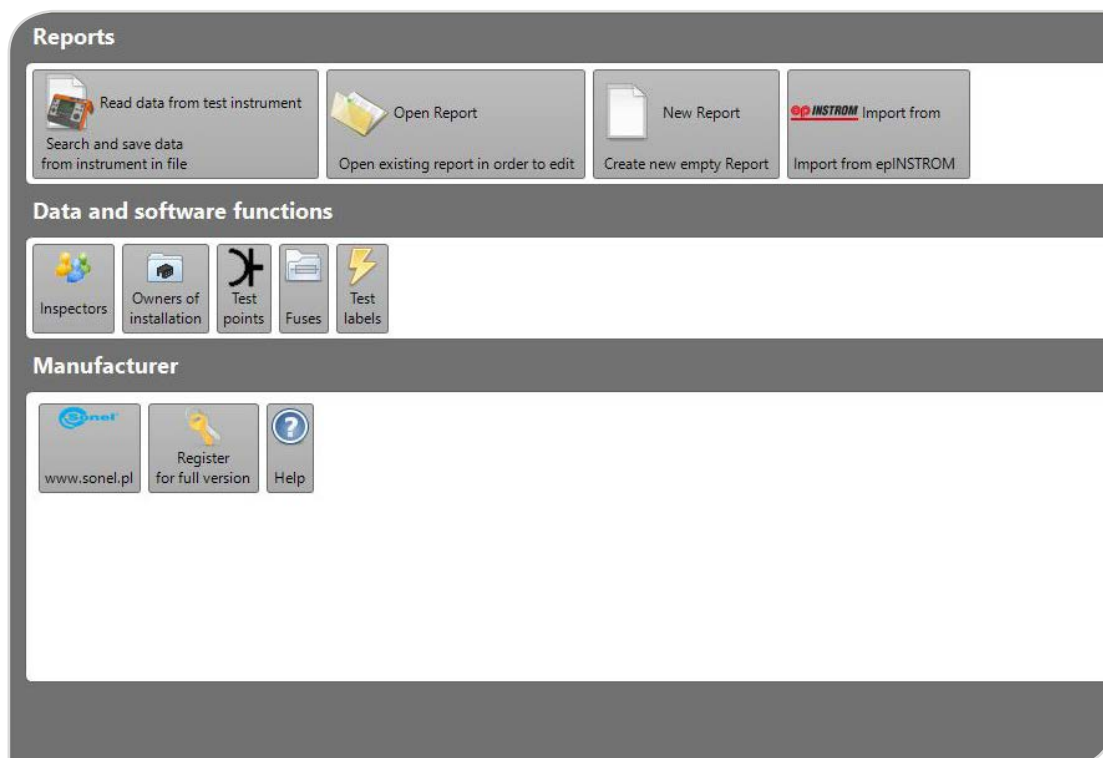
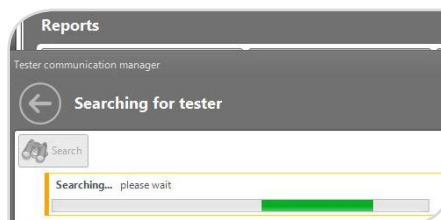
index: WAPROREPORTSPPLUS

Sonel Reports Plus supports creation of documentation after testing of electrical installation. The software communicates with Sonel test instruments, downloads data from memory of the devices and creates necessary documentation. Many useful functions are included in order to help creating documentation of the measurements. Sonel Reports Plus supports the meter by reading, downloading and uploading test structure from/to test instrument.

Features:

- every report can contain description page,
- tree structure presents a clear picture of the tested building and its rooms. Test structure can be uploaded to the meter and downloaded from it together with test results,
- user can print labels for test points,
- for every room user can add picture or scheme of electrical installation,
- software contains library of fuses,
- for every room user can create separate table with test results.

Software dedicated for:





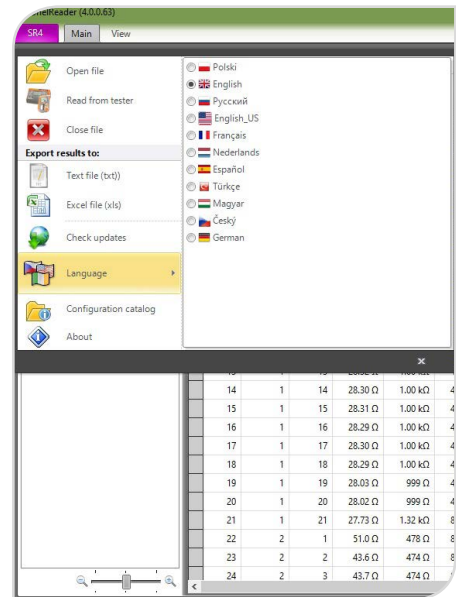
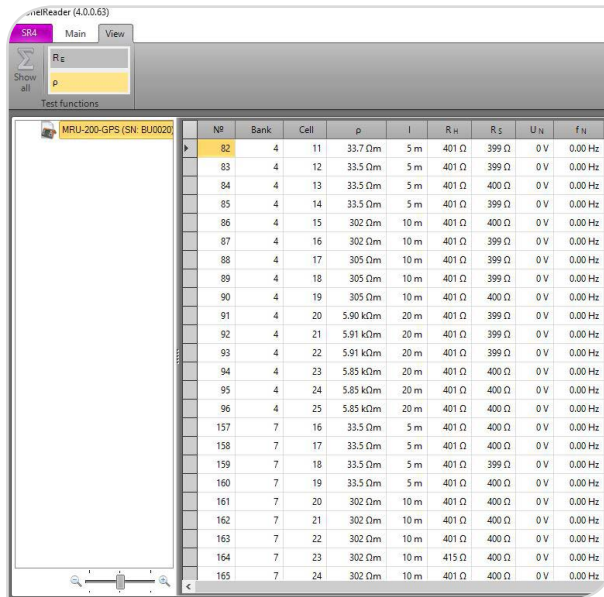
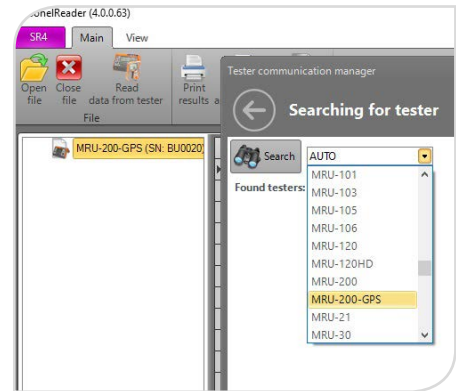
Sonel Reader

index: WAPROREADER

This software is designed for downloading data from the meters. It enables data transfer to the PC, data saving in popular formats and printing.

Software dedicated for:

- MIC-15k1
- MIC-10k1
- MIC-5050
- MIC-5010
- MIC-5005
- MIC-5001
- MIC-2501
- MIC-30

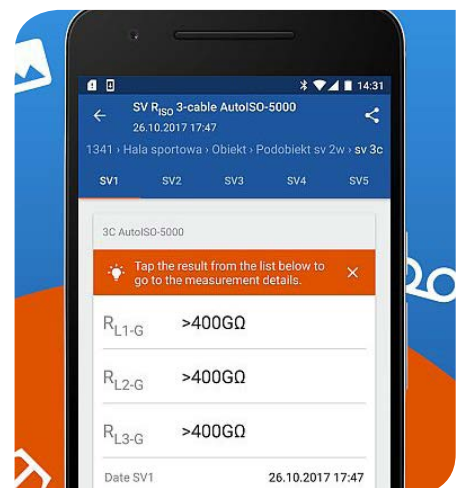


Sonel MIC Mobile

With the application, you can **connect directly to the device** via Bluetooth and download measurement data from the meter. After reading the measurements from the device, they can be easily and quickly **viewed**, and also **sent from the place of measurement** to the person who can help in the interpretation of data or make a measurement report. Additional functionalities will be useful: assigning a photo, text or voice note to a given measurement.

Software dedicated for:

- MIC-15k1
- MIC-10k1
- MIC-5050
- MIC-5010
- MIC-5005





power supply



Cable for battery charging from car cigarette lighter socket (12 V)

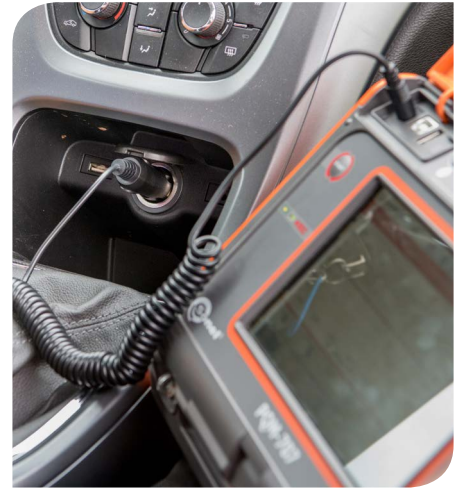
index: WAPRZLAD12SAM

It is connected directly to the meter. It allows user to charge the battery when the only power source is the car cigarette lighter socket. Discharged battery? No outlet? With this accessory you will complete your measurements without interruptions. The cable may be also used for other devices offered by SONEL S.A.

Accessory dedicated for:

MIC-5001

MIC-2501



Z7 power supply

index: WAZASZ7

It is designed to power a number of Sonel measuring devices. It is equipped with IEC C8 male connector for connecting the power cord.

Input voltage	100...240 V AC
Output voltage	12 V DC
Maximum output power	30 W

Accessory dedicated for:

MIC-5001

MIC-2501



230 V mains cable (IEC C7 plug)

index: WAPRZLAD230

It is designed to power a number of Sonel measuring devices. One of its ends is terminated with C7 plug, while the other with the mains plug of CEE 7/16 type („Europlug”).

Cross-section area of the wire	2 x 0.75 mm ²
Nominal voltage	250 V AC/DC

Accessory dedicated for:

MIC-5001

MIC-2501





230 V mains cable (IEC C13 plug)

index: WAPRZ1X8BLIEC

It is designed to power a number of Sonel measuring devices. One of its ends is terminated with C13 plug, while the other with the mains plug of CEE 7/16 type („Europlug”).

Cross-section area of the wire	2 x 0.75 mm ²
Nominal voltage	250 V AC

Accessory dedicated for:

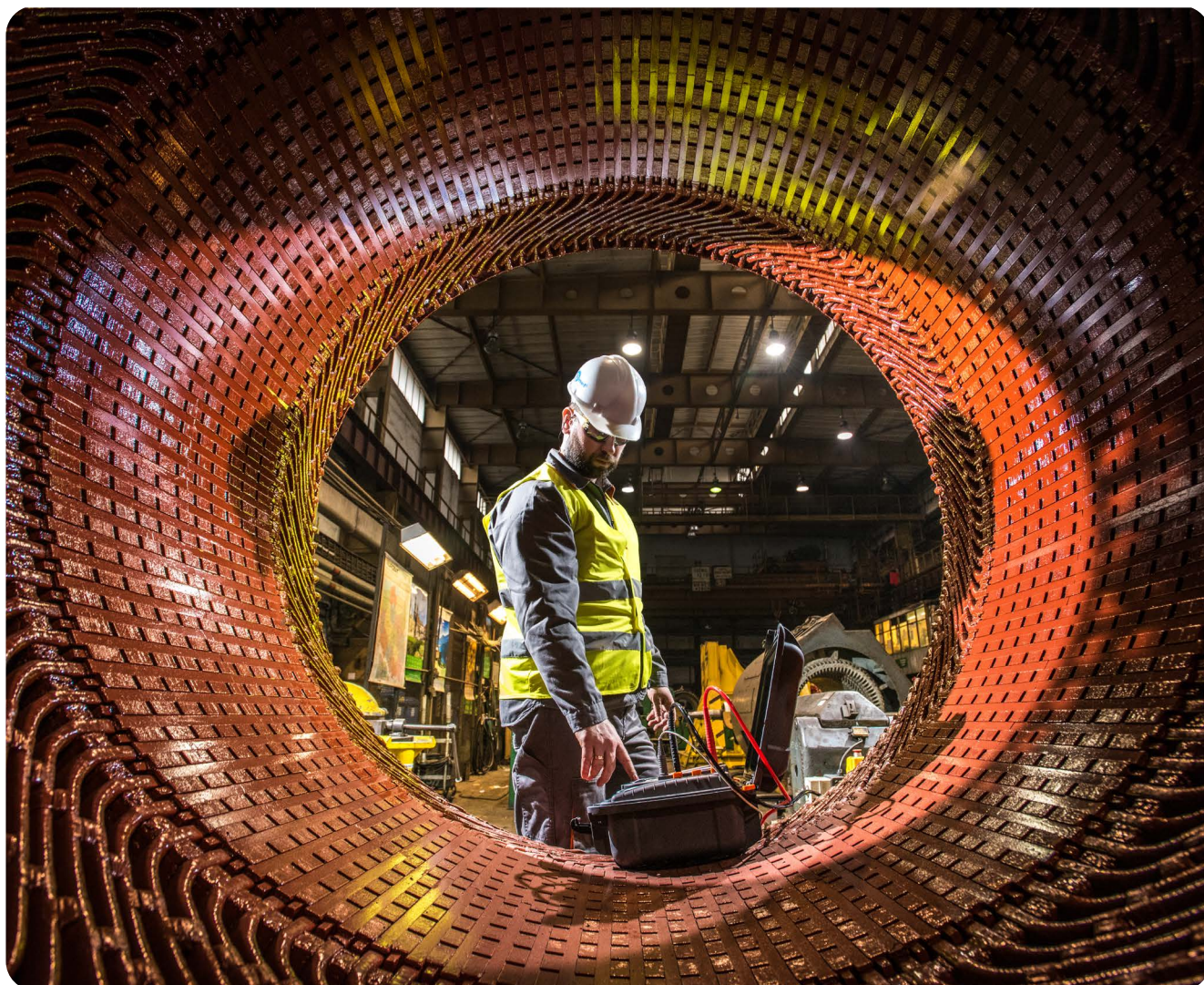
MIC-15k1

MIC-10k1

MIC-5050

MIC-5010

MIC-5005





transportation



L4 carrying case

index: WAFUTL4

This case is designed for storage and transport of the meter and its accessories. It has three main compartments closed with a zipper and one pocket on the flap. The compartments are equipped with elastic bands for fixing the accessories. The case is provided with a strap for hanging it on the user's shoulder. Its bottom part is protected against contact with the ground by two feet.

Accessory dedicated for:

MIC-15k1

MIC-10k1

MIC-5050

MIC-5010

MIC-5005



M6 carrying case

index: WAFUTM6

This case is designed for storage and transport of the meter and its accessories. It has one main compartments closed with a zipper and one pocket on the flap. The main compartment is provided with an insert dividing it into smaller parts. It also has additional elastic bands for fixing the accessories. The case is provided with a strap for hanging it on the user's shoulder. Its bottom part is protected against contact with the ground by two feet.

Accessory dedicated for:

MIC-30

MIC-10



M8 carrying case

index: WAFUTM8

Intended for storage and transport of the test instrument with accessories. Includes a removable pouch for accessories. The pouch can be attached to a belt, for example. The main chamber is equipped with velcro straps, protecting the device from falling out. The case has zippered inspection holes, making it easy to connect the wires without removing the test instrument from the case. The bottom is protected from contact with the ground by means of plastic legs.

Accessory dedicated for:

MIC-5001

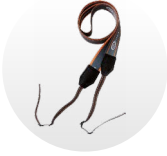
MIC-2501







transportation



M1 hanging straps

index: WAPOZSZE4

The hanging straps are designed for carrying and hanging Sonel meters. Their length is adjustable. The straps may be used to hang the meter around the neck or on the shoulder.

Accessory dedicated for:

MIC-30

MIC-10



W1 hanging straps

index: WAPOZSZE5

Intended for transporting and hanging Sonel test instruments. The suspenders feature length adjustment. They enable hanging the device both on the neck and on the shoulder.

Accessory dedicated for:

MIC-15k1

MIC-10k1

MIC-5050

MIC-5010

MIC-5005



Hanging hook straps

index: WAPOZUCH1

The straps are designed for hanging the meters in safe locations to free the operator's hands. Their one end is provided with a hook, while the other with a Velcro strap used to attach the device.

Accessory dedicated for:

MIC-30

MIC-10



Photo	Name	Index	MIC-15k1	MIC-10k1	MIC-5050	MIC-5010	MIC-5005	MIC-5001	MIC-2501	MIC-30	MIC-10	
	AGT-16C three-phase socket adapter 16 A (PEN)	WAADAAGT16C									•	•
	AGT-16P three-phase socket adapter 16 A	WAADAAGT16P									•	•
	AGT-16T industrial socket adapter 16 A	WAADAAGT16T									•	•
	AGT-32C three-phase socket adapter 32 A (PEN)	WAADAAGT32C									•	•
	AGT-32P three-phase socket adapter 32 A	WAADAAGT32P									•	•
	AGT-32T industrial socket adapter 32 A	WAADAAGT32T									•	•
	AGT-63P three-phase socket adapter 63 A	WAADAAGT63P									•	•
	AutoISO-5000 adapter	WAADA AIS050	•	•								
	WS-04 adapter with UNI-Schuko angular plug	WAADAWS04									•	
	Crocodile clip, black, 1 kV, 20 A	WAKROBL20K01									•	1
	Crocodile clip, red, 1 kV, 20 A	WAKRORE20K02									•	•
	Crocodile clip, blue, 1 kV, 20 A	WAKROBU20K02									1	•
	Crocodile clip, black, 11 kV, 32 A	WAKROBL32K09	•	•	1	1	1	1	1			
	Crocodile clip, red, 11 kV, 32 A	WAKRORE32K09	•	•	1	1	1	1	1			

Photo	Name	Index	MIC-15k1	MIC-10k1	MIC-5050	MIC-5010	MIC-5005	MIC-5001	MIC-2501	MIC-30	MIC-10	
	Crocodile clip, blue, 11 kV, 32 A	WAKROBU32K09			•	•	1	1	1	1		
	Test lead 1 kV (banana plugs) black 1.2 m	WAPRZ1X2BLBB										1
	Test lead 1 kV (banana plugs, shielded) black 1.2 m	WAPRZ1X2BLBBE									1	•
	Test lead 1 kV (banana plugs, shielded) black 5 m	WAPRZ005BLBBE									•	•
	Test lead 1 kV (banana plugs) red 1.2 m	WAPRZ1X2REBB									1	1
	Test lead 1 kV (banana plugs) red 5 m	WAPRZ005REBB									•	•
	Test lead 1 kV (banana plugs) blue 1.2 m	WAPRZ1X2BUBB									1	•
	Test lead 1 kV (banana plugs) blue 5 m	WAPRZ005BUBB									•	•
	Test lead 5 kV (banana plugs, shielded) black 1.8 m	WAPRZ1X8BLBB			•	•	•	1	1			
	Test lead 5 kV (banana plugs, shielded) black 5 / 10 m	WAPRZ005BLBBE5K WAPRZ010BLBBE5K			•	•	•	•	•			
	Test lead 5 kV (banana plugs) red 1.8 m	WAPRZ1X8REBB			•	•	•	1	1			
	Test lead 5 kV (banana plugs) red 5 / 10 m	WAPRZ005REBB5K WAPRZ010REBB5K			•	•	•	•	•			
	Test lead 5 kV (banana plugs) blue 1.8 m	WAPRZ1X8BUBB			•	•	•	1	1			
	Test lead 5 kV (banana plugs) blue 5 m	WAPRZ005BUBB5K			•	•	•	•	•			

Photo	Name	Index	MIC-15k1	MIC-10k1	MIC-5050	MIC-5010	MIC-5005	MIC-5001	MIC-2501	MIC-30	MIC-10
	Test lead 5 kV (banana plugs) blue 10 m	WAPRZ010BUBB5K			•	•	•	•	•		
	Test lead 11 kV (banana plugs, shielded) black 1.8 m	WAPRZ1X8BLBBE10K		•	•	1	1				
	Test lead 11 kV (banana plugs, shielded) black 3 / 5 / 10 / 20 m	WAPRZ003BLBBE10K WAPRZ005BLBBE10K WAPRZ010BLBBE10K WAPRZ020BLBBE10K		•	•	•	•				
	Test lead 11 kV (banana plugs) red 1.8 m	WAPRZ1X8REBB10K		•	•	1	1				
	Test lead 11 kV (banana plugs) red 3 / 5 / 10 / 20 m	WAPRZ003REBB10K WAPRZ005REBB10K WAPRZ010REBB10K WAPRZ020REBB10K		•	•	•	•				
	Test lead 11 kV (banana plugs) blue 1.8 m	WAPRZ1X8BUBB10K		•	•	1	1				
	Test lead 11 kV (banana plugs) blue 3 / 5 / 10 / 20 m	WAPRZ003BUBB10K WAPRZ005BUBB10K WAPRZ010BUBB10K WAPRZ020BUBB10K		•	•	•	•				
	Test lead 15 kV with crocodile clip, shielded, black 1.8 m	WAPRZ1X8BLKROE15KV	1	•	•	•	•				
	Test lead 15 kV with crocodile clip, shielded, black 3 m	WAPRZ003BLKROE15KV	•	1	1	•	•				
	Test lead 15 kV with crocodile clip, shielded, black 5 / 10 / 20 m	WAPRZ005BLKROE15KV WAPRZ010BLKROE15KV WAPRZ020BLKROE15KV	•	•	•	•	•				
	Test lead 15 kV with crocodile clip, red 1.8 m	WAPRZ1X8REKRO15KV	1	•	•	•	•				
	test lead 15 kV with crocodile clip, red 3 m	WAPRZ003REKRO15KV	•	1	1	•	•				
	test lead 15 kV with crocodile clip, red 5 / 10 / 20 m	WAPRZ005REKRO15KV WAPRZ010REKRO15KV WAPRZ020REKRO15KV	•	•	•	•	•				
	Test lead 15 kV with crocodile clip, blue 1.8 m	WAPRZ1X8BUKRO15KV	1	•	•	•	•				

Photo	Name	Index	MIC-15k1	MIC-10k1	MIC-5050	MIC-5010	MIC-5005	MIC-5001	MIC-2501	MIC-30	MIC-10		
	Test lead 15 kV with crocodile clip, blue 3 m	WAPRZ003BUKRO15KV	•	1	1	•	•						
	Test lead 15 kV with crocodile clip, blue 5 / 10 / 20 m	WAPRZ005BUKRO15KV WAPRZ010BUKRO15KV WAPRZ020BUKRO15KV	•	•	•	•	•						
	PRS-1 resistance test probe	WASONPRS1GB	•	•	•	•	•	•	•	•	•		
	Temperature probe ST-1	WASONT1		•	•								
	Pin probe, black 1 kV (banana socket)	WASONBLOGB1								•	1	1	
	Pin probe, red 1 kV (banana socket)	WASONREOGB1								•	1	1	
	Pin probe, blue 1 kV (banana socket)	WASONBUOGB1								•	•	•	
	Pin probe, black 5 kV (banana socket)	WASONBLOGB2									1	1	
	Pin probe, red 5 kV (banana socket)	WASONREOGB2									1	1	
	Pin probe, black 11 kV (banana socket)	WASONBLOGB11									1	1	
	Pin probe, red 11 kV (banana socket)	WASONREOGB11									1	1	
	CS-1 cable simulator	WAADACS1									•	•	•
	CS-5kV calibration box	WAADACS5KV	•	•	•	•	•	•	•				
	SRP-10G0-10T0 resistance calibrator	WMGBSRP10G010T0	•	•	•	•	•	•					













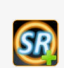

Photo	Name	Index	MIC-15k1	MIC-10k1	MIC-5050	MIC-5010	MIC-5005	MIC-5001	MIC-2501	MIC-30	MIC-10
	Z7 power supply	WAZASZ7						1	1		
	Mains cable with IEC C7 plug	WAPRZLAD230						1	1		
	Mains cable with IEC C13 plug	WAPRZ1X8BLIEC	1	1	1	1	1				
	Cable for battery charging from car cigarette lighter socket (12 V)	WAPRZLAD12SAM							•	•	
	M1 hanging straps	WAPOZSZE4								1	1
	W1 hanging straps	WAPOZSZE5	1	•	•	1	1				
	M1 hanging hook straps	WAPOZUCH1								1	1
	L4 carrying case	WAFUTL4	1	1	1	1	1				
	M6 carrying case	WAFUTM6								1	1
	M8 carrying case	WAFUTM8						1	1		
	Mini Bluetooth keyboard	WAADAMK		•	•						
	S4 armband case for Mini Bluetooth keyboard	WAFUTS4		•	•						
	Mini Bluetooth keyboard with armband case	WAADAMKZ		•	•						
	USB cable	WAPRZUSB	1	1	1	1	1	1	1		

Photo	Name	Index	MIC-15k1	MIC-10k1	MIC-5050	MIC-5010	MIC-5005	MIC-5001	MIC-2501	MIC-30	MIC-10
	PC software: Sonel Reports PLUS	WAPROREPORTSPUS	•	•	•	•	•	•	•	•	•
	PC software: Sonel Reader	WAPROREADER	•	•	•	•	•	•	•	•	•

1, 2, 4 - the number of standard accessories
• - optional accessory

