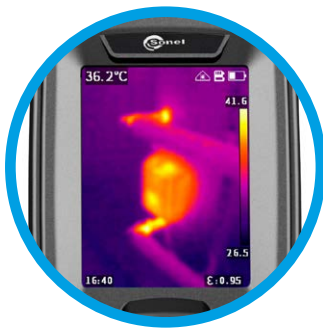


-  **IP54**
-  **LASER POINTER**
-  **VISUAL CAMERA**



### 2.4" display

Clear temperature reading



### Large buttons

Conveniently located for flawless control



### KT-128 • KT-256

#### Trigger

Temperature measurement with a single press



### KT-256F

#### Autofocus trigger

Sharp image with a single press

#### Trigger

Temperature measurement with a single press

## Feel safe with thermography

### Simple thermography

KT-128 / 256 / 256F is a special camera. Economical, practical and handy, it is a powerful tool in everyday work. The camera is used for basic diagnostics. It is equipped with a matrix having a resolution of:

- » **KT-128** | 120 x 90 pixels,
- » **KT-256 • KT-256F** | 256 x 192 pixels,

supported by visual camera, laser pointer and additional features to fully meet the needs of users.

### KT-256F | Autofocus

KT-256F is equipped with an automatic focus which ensures that your IR measurement pictures will always be sharp and crisp, no matter the distance.

### Application

KT-128 / 256 / 256F is used always when the temperature of objects is important and may affect the operation of the equipment. Particularly useful in:

- power engineering (including PV installations),
- construction sector,
- industry
- HVAC.



## Features

- measuring range:
  - » **KT-128** | -20°C...400°C (-20°F... 752°F)
  - » **KT-256 • KT-256F** | -20°C...550°C (-20°F... 1022°F)
- quick start
- fast temperature measurement
- automatic signalling of exceeded alarm threshold
- **KT-256F** | autofocus
- saving IR images to SD card
- built-in Li-Ion battery with:
  - » **KT-128** | 5-hour working time
  - » **KT-256 • KT-256F** | 16-hour working time
- interfaces: USB type C, SD slot
- can be set up on a tripod

## Specifications

	KT-128	KT-256	KT-256F
Detector resolution	120 x 90 / 17 µm VOx		256 x 192 / 12 µm VOx
Detector		7.5~14 µm	
Frame rate		25 Hz	
Sensitivity	60 mK		45 mK
Focus		Fixed	Auto
Lens (field of vision / focal distance)	50° x 38°/2.28 mm	56° x 48°/3.2 mm	25° x 19°/7 mm
Spatial resolution (IFOV)	7.6 mrad	3.75 mrad	1.71 mrad
Display		2.4", 240 x 320, LCD	2.4" 240 x 320 px LCD
Image mode	IR / Visual / PiP	IR / Visual / Infrarufusion MIF / PiP	
Temperature range	Range 1: -20°C...+150°C   -20°F...+302°F Range 2: 100°C...+400°C   212°F...752°F	Range 1: -20°C...+150°C   -20°F...+302°F Range 2: 100°C...+550°C   212°F...1022°F	
Accuracy		±2°C   ±4°F or ±2% of reading (for ambient temperature 15°C...30°C, object temp. ≥0°C)	
Image analysis mode		Point. 3 areas. Temperature indication: min, max. Temp. alarm	
Palettes		6	
Emissivity		Selectable from 0.01 to 1.00 or from the list	
Measurement adjustment		Adjustable distance, ambient temperature (reflected)	
Image file format		JPG	
Built-in features		Visual camera 2 MPix, LED flashlight, laser pointer	
Interfaces		microSD card slot (max. 32 GB), USB type C, tripod	
Power supply	Li-Ion battery (operating time >5 hours), built-in charger (charging time <2.5 hour), AC adapter 110-230 V, 50/60 Hz		Li-Ion battery (operating time >16 hours), built-in charger (charging time <2.5 hour), AC adapter 110-230 V, 50/60 Hz
Operating temperature	-10°C...+50°C   14°F...122°F		-15°C...+50°C   5°F...122°F
Storage temperature		-40°C...+70°C   -40°F...+158°F	
Housing		IP54	
Weight	ca. 0.35 kg   0.77 lbs		ca. 0.38 kg   0.84 lbs

## Standard accessories

	KT-128	KT-256	KT-256F
<b>USB charger</b> WAZASZ20	✓	✓	✓
<b>Type C USB cable</b> WAPRZUSBC	✓	✓	✓
<b>16 GB microSD card</b> WAPOZMSD16	✓	✓	
<b>32 GB microSD card</b> WAPOZMSD32			✓
<b>Wristband</b> WAPOZPAS1	✓	✓	✓
<b>Declaration of verification</b>	✓	✓	✓

## Optional accessories

**S-1 carrying case**  
WAFUTS1

**Calibration certificate with accreditation**

